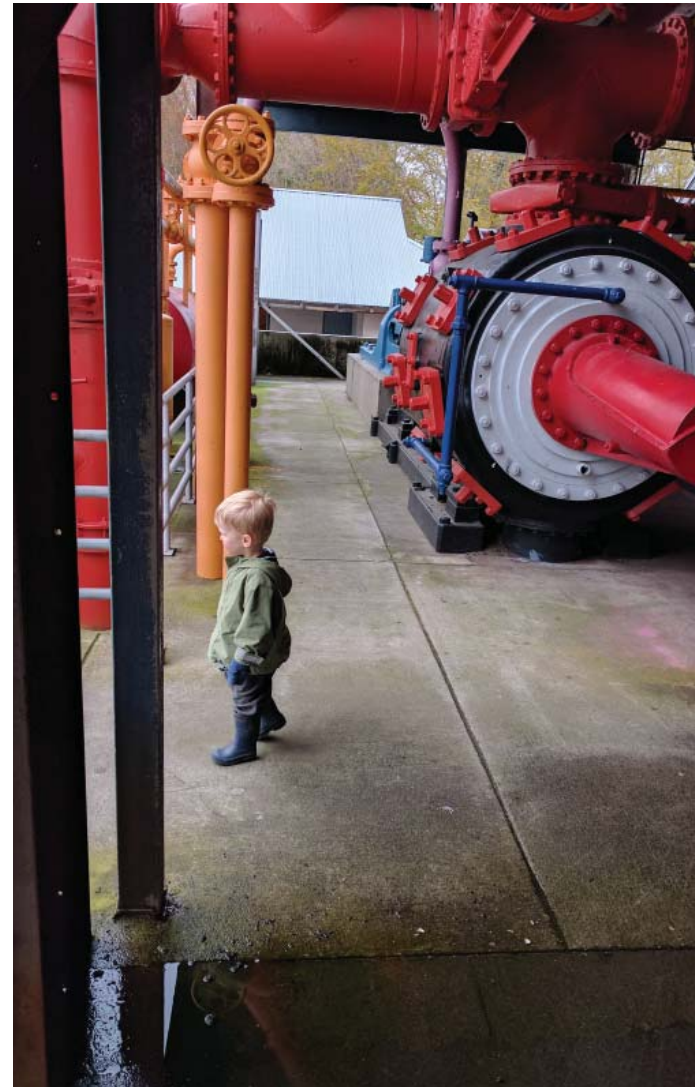


**“A computer lets you make more mistakes  
faster than any other invention with the possible  
exceptions of handguns and tequila.”  
— Mitch Ratcliffe, Tech Writer**

**“You’re the boss of the machine.”  
— Julia Child, Chef**

Why are we standing up here?



HEWITT

BIM, bam, BOOM

Are you experienced or just...

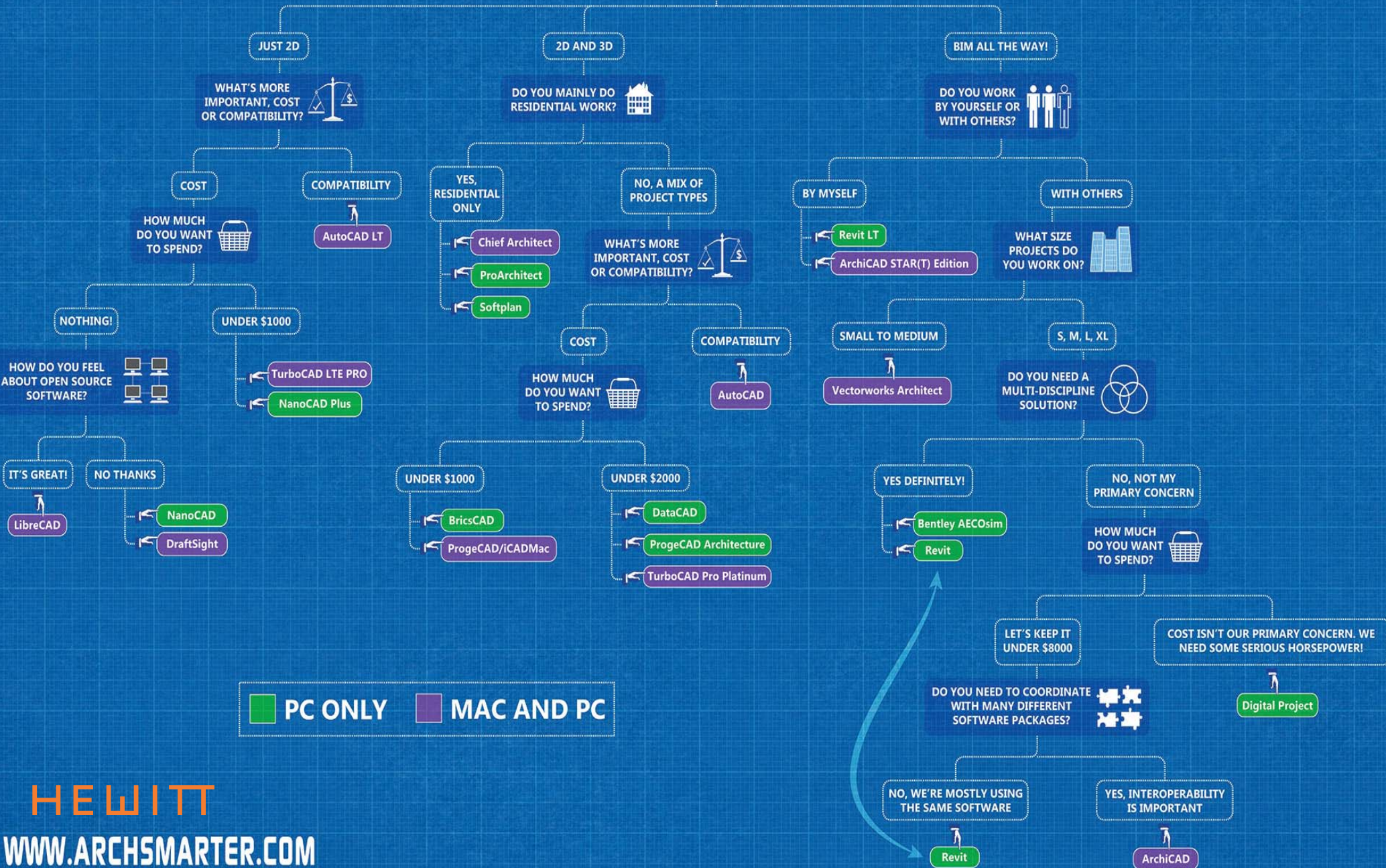
**BIM-Curious?!?!?**



# BIM vs. CAD

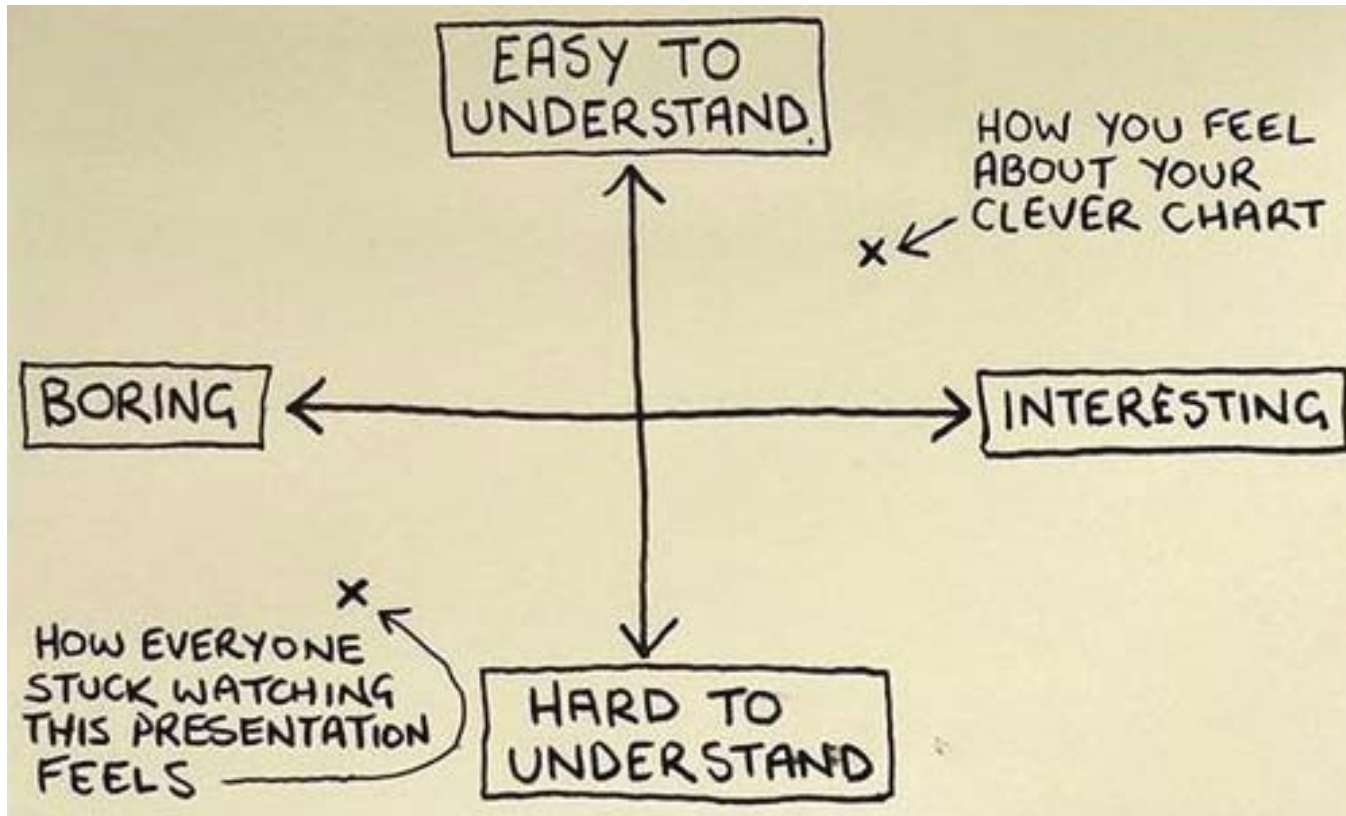
## WHICH ARCHITECTURAL SOFTWARE IS RIGHT FOR ME?

WHAT CORE FUNCTIONALITY DO YOU NEED?

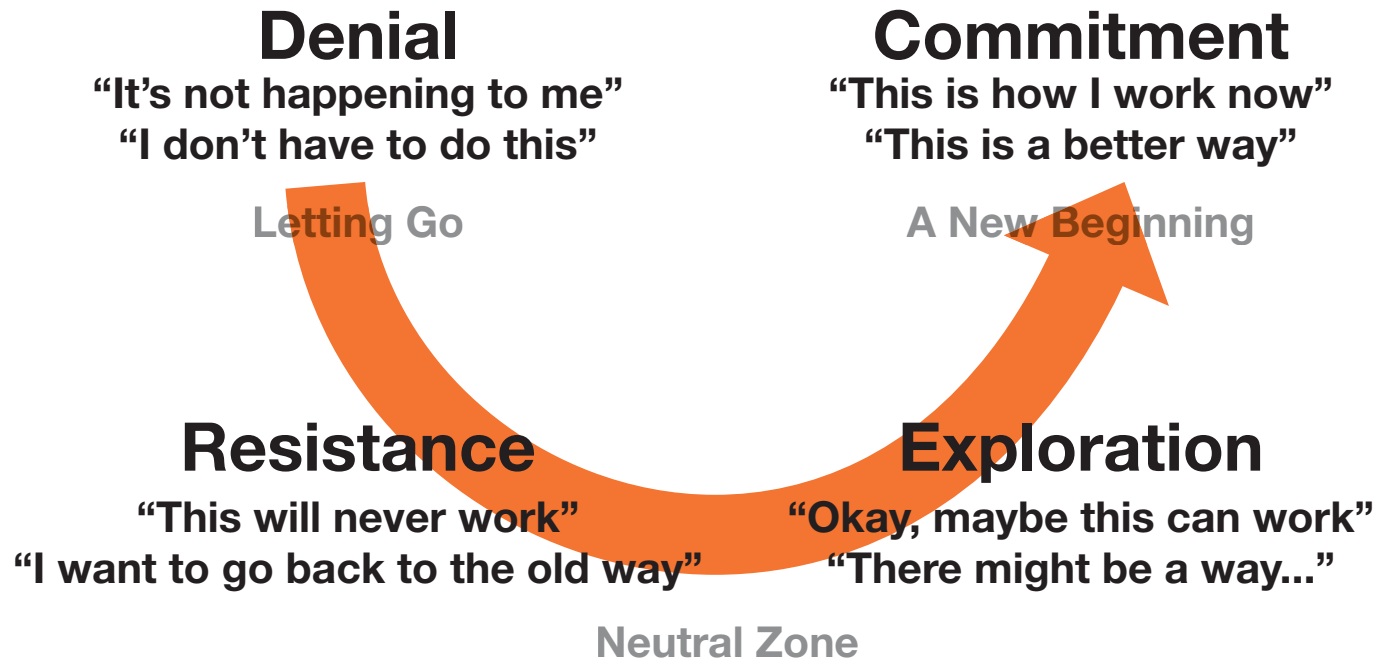




How we really feel...

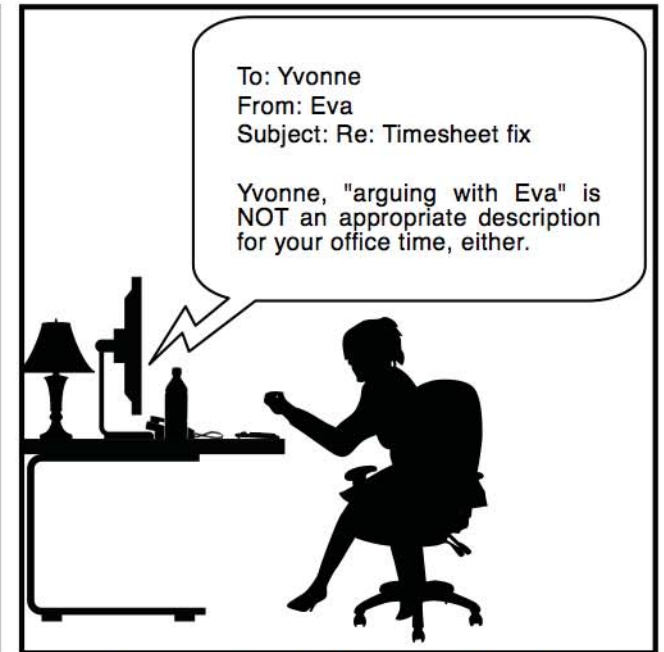
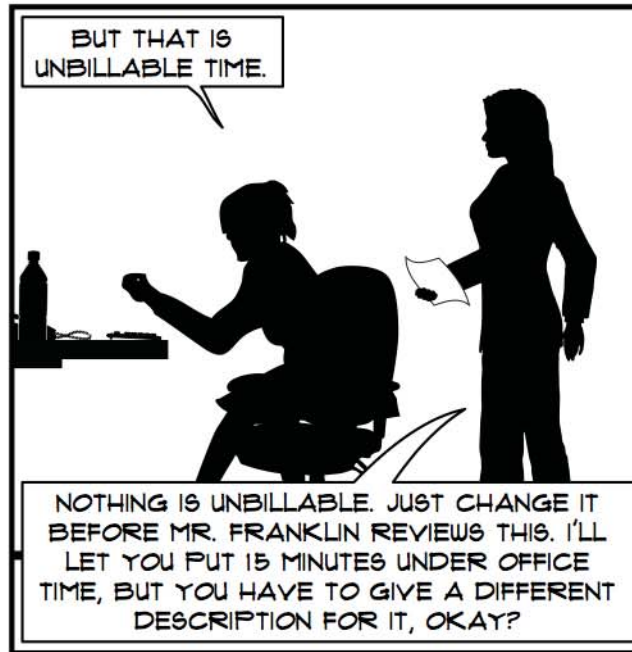
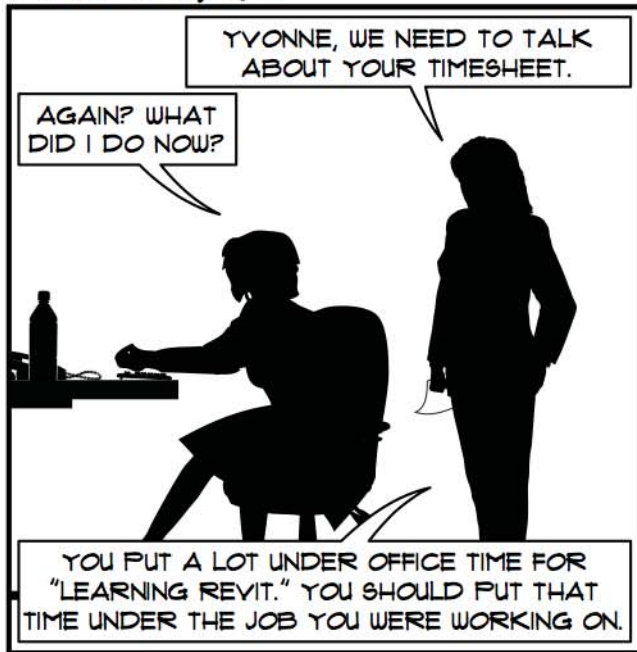


# Commitment to Adaptation



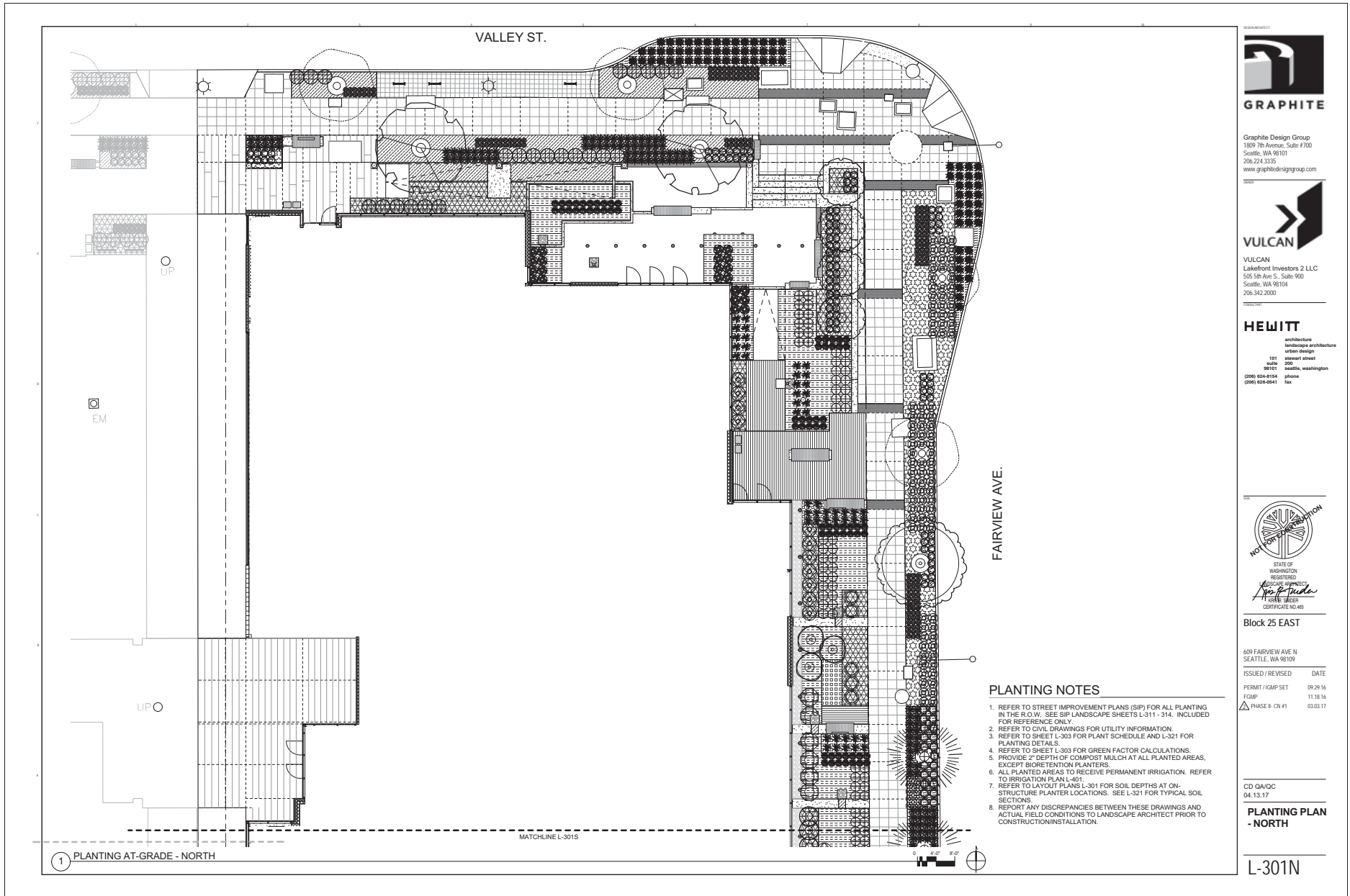
# There is a Learning Curve

## ARCHITEXTS



© 2013 ARCHITEXTS.US ALL RIGHTS RESERVED

This is a tool to get a job done



Graphite Design Group  
1809 7th Avenue, Suite #700  
Seattle, WA 98101  
206.224.3330  
www.graphitedesigngroup.com



VULCAN  
Lakefront Investors 2 LLC  
525 5th Ave S, Suite 900  
Seattle, WA 98104  
206.342.2000

**HEWITT**  
architecture  
landscape architecture  
urban design  
101 second street  
suite 200  
98101 seattle, washington  
(206) 624-8154 phone  
(206) 626-0941 fax



Block 25 EAST

659 FAIRVIEW AVE N  
SEATTLE, WA 98109

ISSUED / REVISED	DATE
PERMIT / I/GMP SET	09.29.16
I/GMP	11.18.16
PHASE II - CN #1	03.03.17

CD QAVQC  
04.13.17

**PLANTING PLAN  
- NORTH**

L-301N

**PLANTING NOTES**

1. REFER TO STREET IMPROVEMENT PLANS (SIP) FOR ALL PLANTING IN THE R.O.W. SEE SIP LANDSCAPE SHEETS L-311 - 314. INCLUDED FOR REFERENCE ONLY.
2. REFER TO CIVIL DRAWINGS FOR UTILITY INFORMATION.
3. REFER TO SHEET L-303 FOR PLANT SCHEDULE AND L-321 FOR PLANTING DETAILS.
4. REFER TO SHEET L-303 FOR GREEN FACTOR CALCULATIONS.
5. PROVIDE 2" DEPTH OF COMPOST MULCH AT ALL PLANTED AREAS, EXCEPT BIORETENTION PLANTERS.
6. ALL PLANTED AREAS TO RECEIVE PERMANENT IRRIGATION. REFER TO IRRIGATION PLAN L-401.
7. REFER TO LAYOUT PLANS L-301 FOR SOIL DEPTHS AT ON-STRUCTURE PLANTER LOCATIONS. SEE L-321 FOR TYPICAL SOIL SECTIONS.
8. REPORT ANY DISCREPANCIES BETWEEN THESE DRAWINGS AND ACTUAL FIELD CONDITIONS TO LANDSCAPE ARCHITECT PRIOR TO CONSTRUCTION/INSTALLATION.

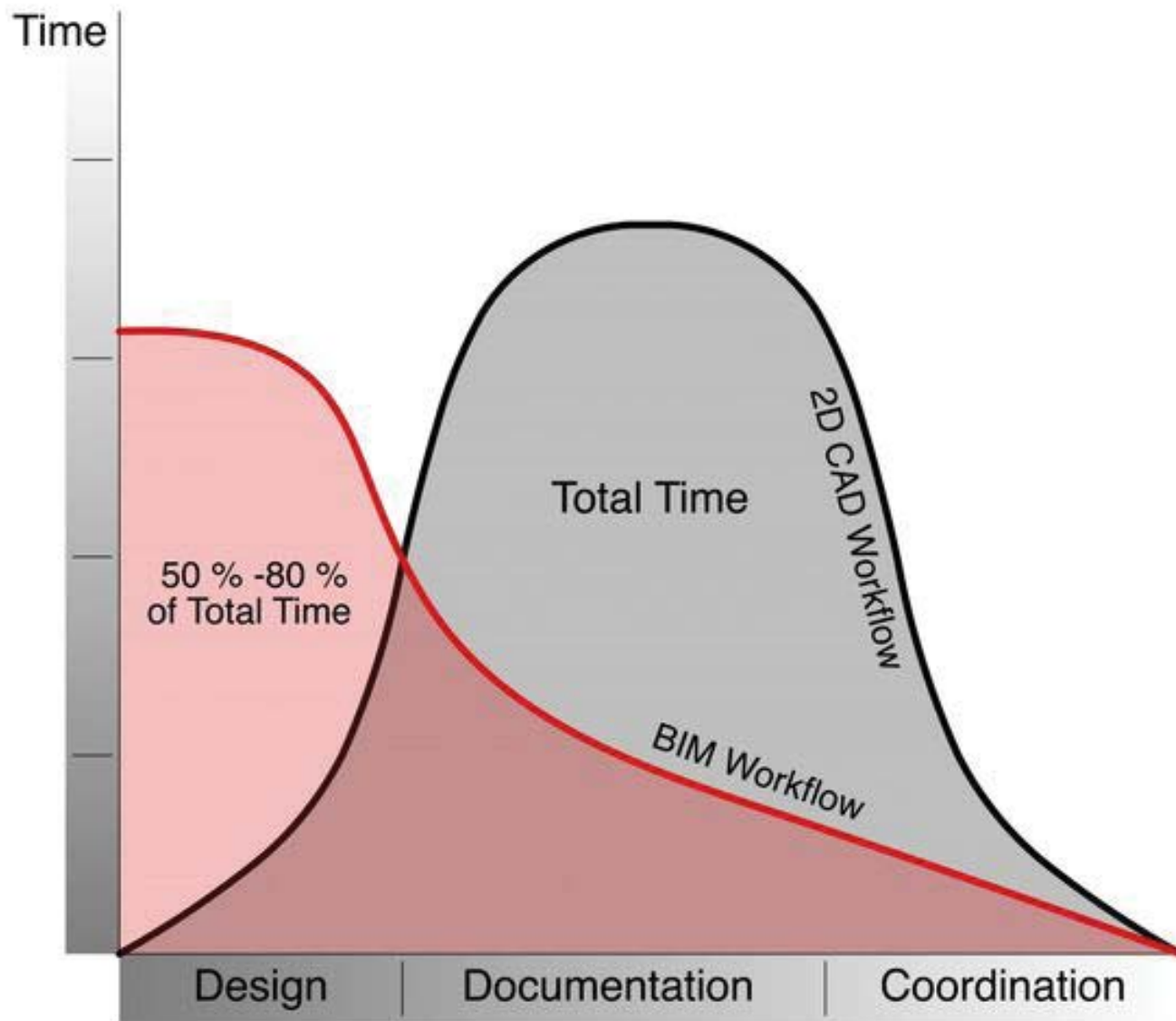
Something to remember...



HEWITT

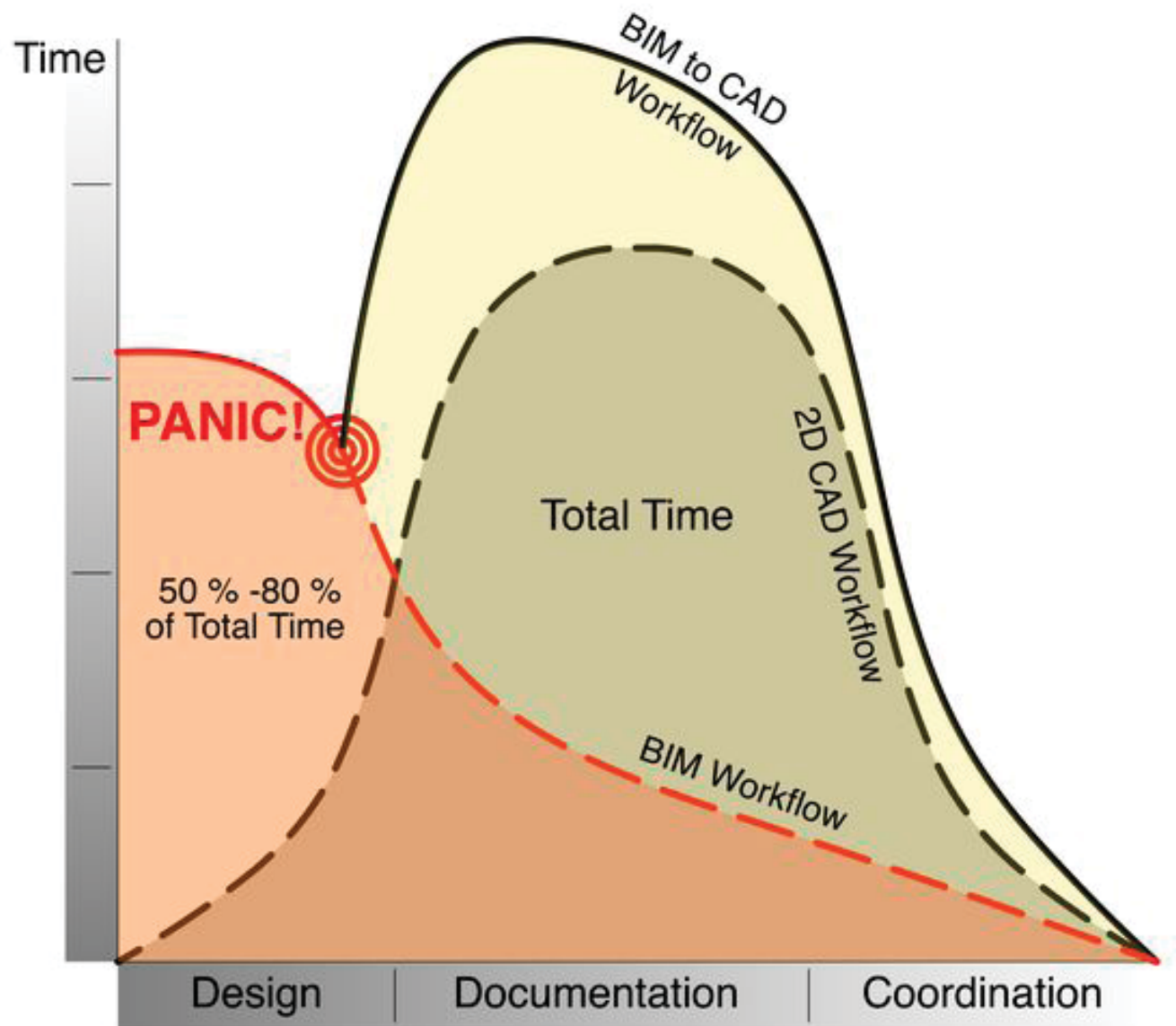
BIM, bam, BOOM

# Design Process Comparison

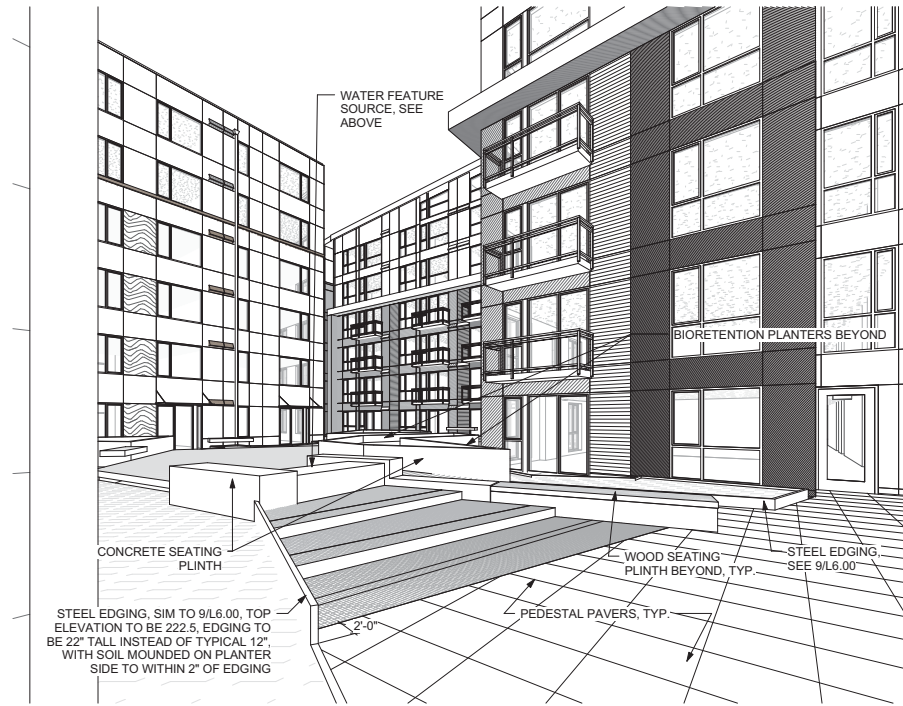




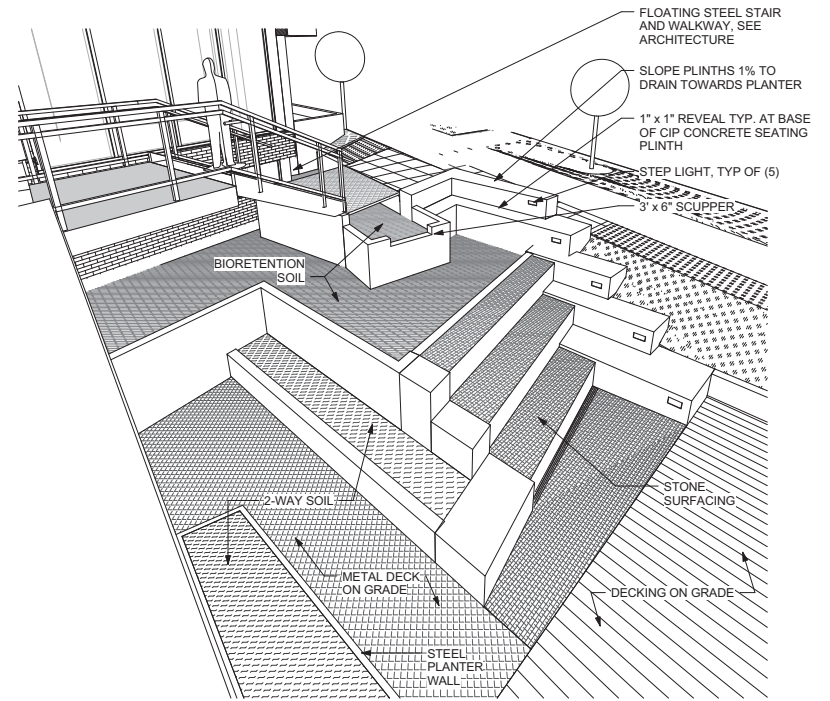
...and this is what happens when you revert back to CAD...



# Modeling v. Drafting

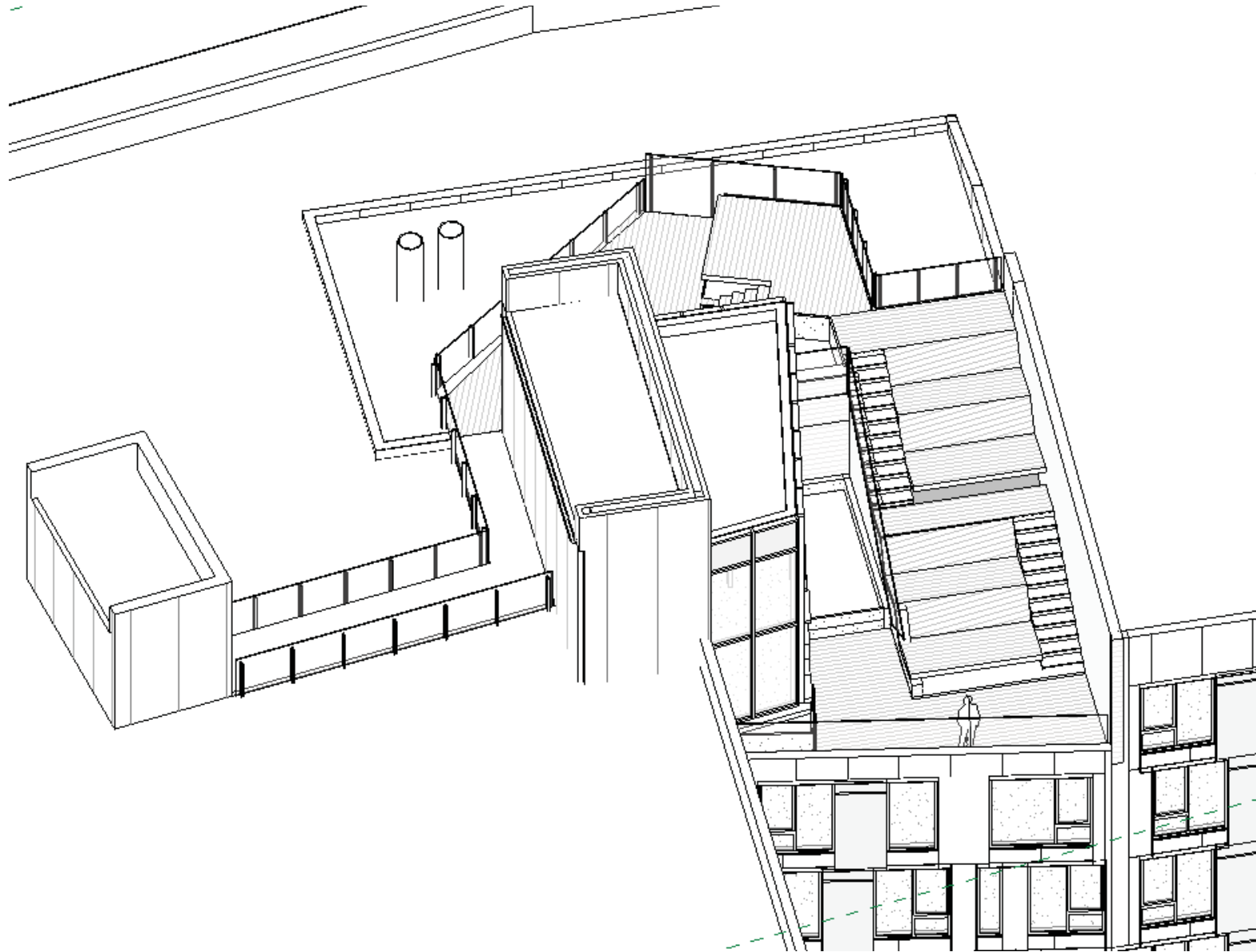


4 WATER FEATURE #2

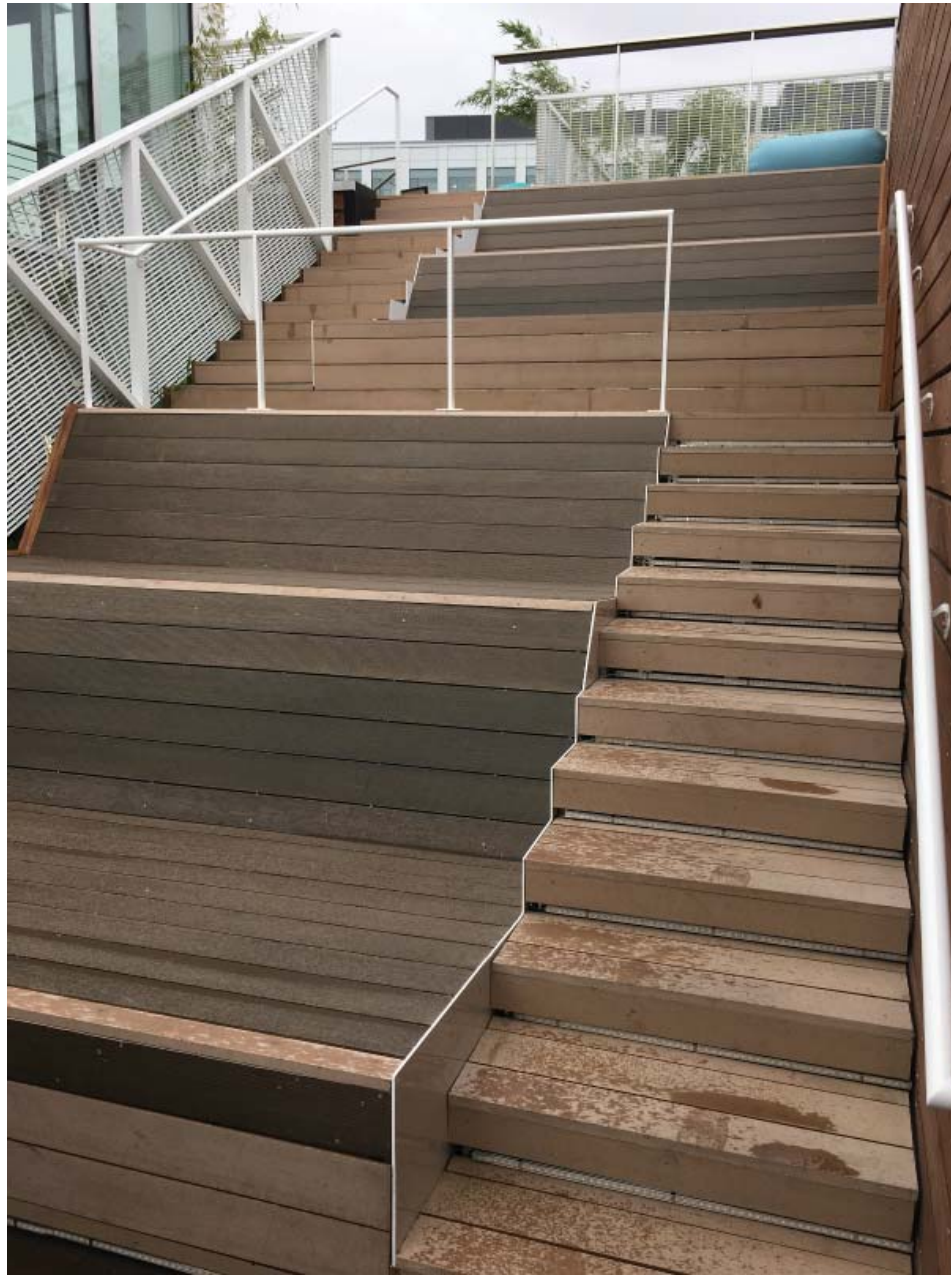


1 WATER FEATURE #1

# Modeling v. Drafting



Instant sharing of data... Yeah!



HEWITT

BIM, bam, BOOM



# Shared Etiquette is Necessary



Instant Sharing of data.. Booo!

**“You got your peanut butter on my chocolate!”**



**“You got your chocolate in my peanut butter!”**

HEWITT

BIM, bam, BOOM

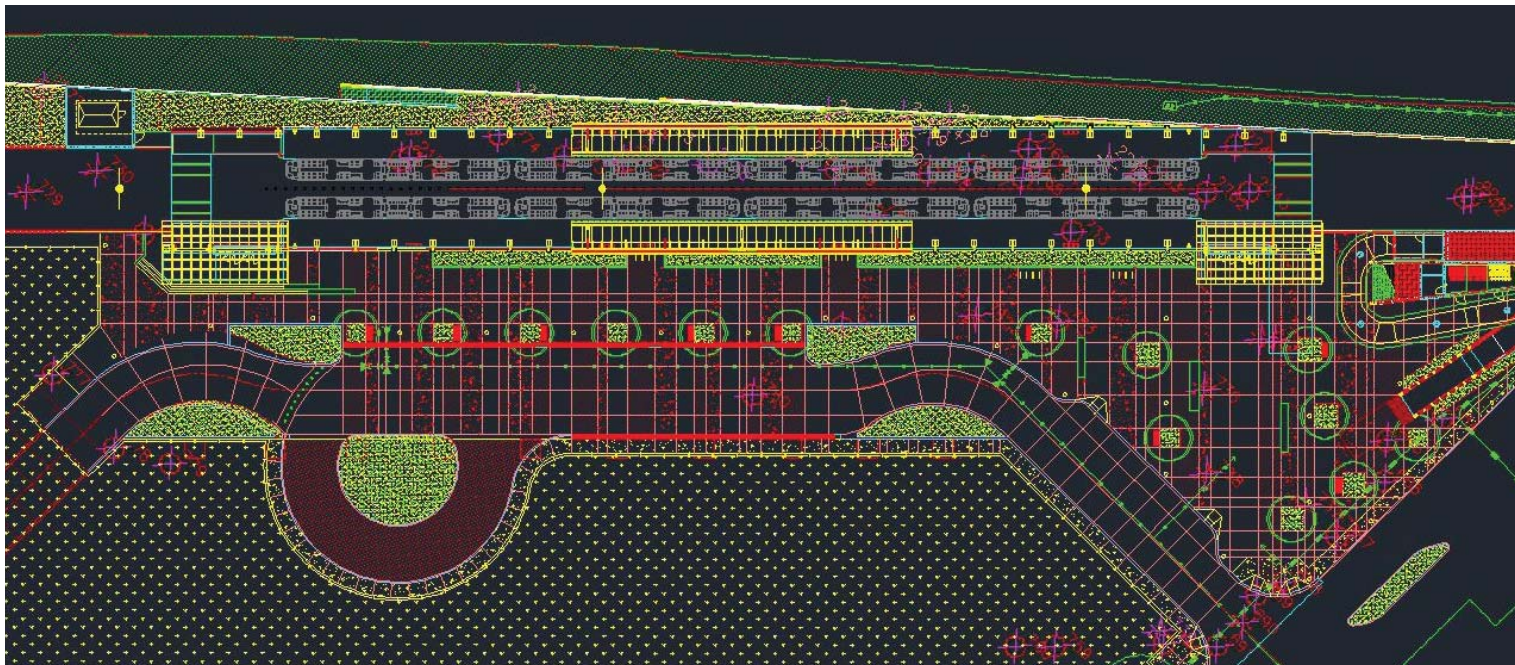
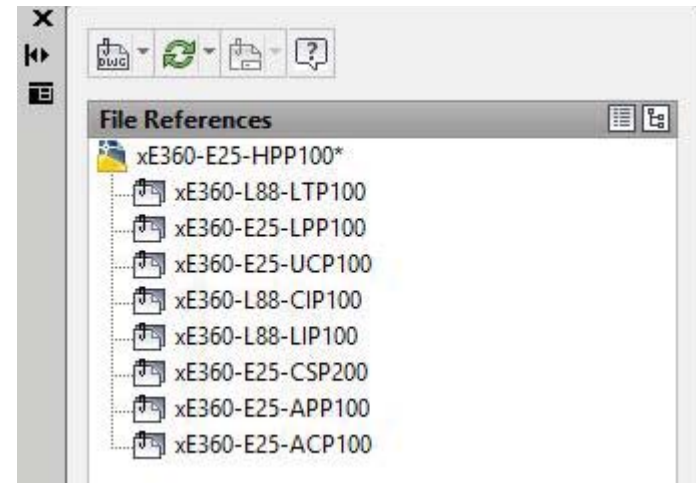
But before you go rogue...

**IF YOU SEE  
SOMETHING  
SAY SOMETHING**

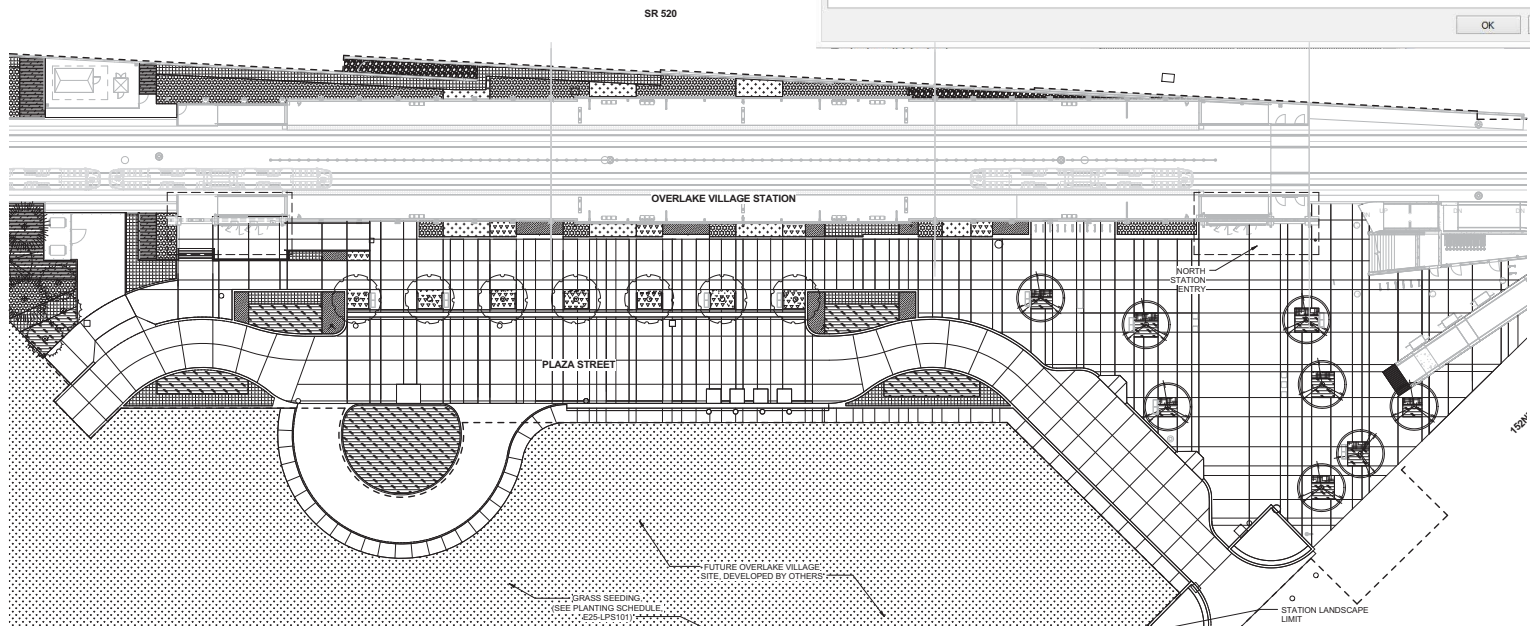
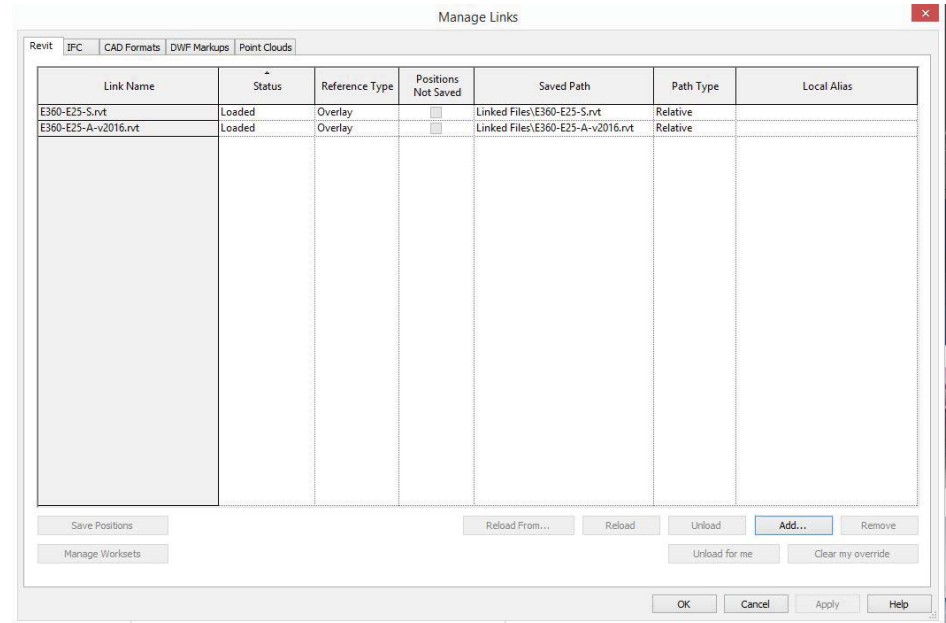




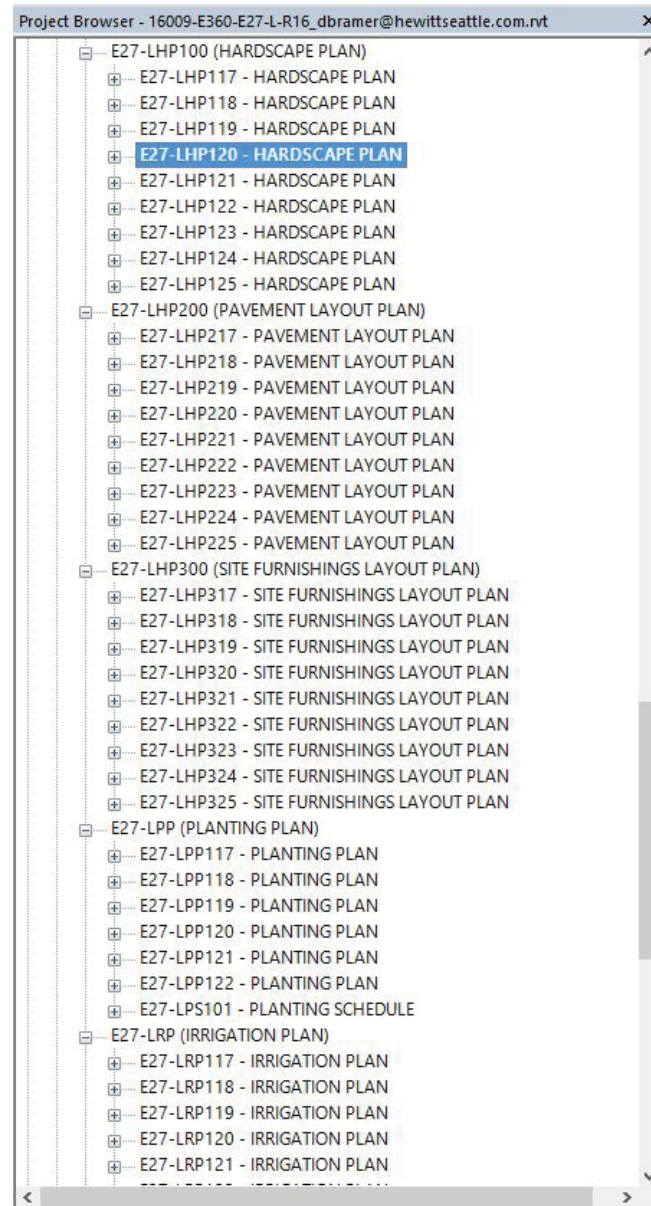
# File Sharing



# File Sharing



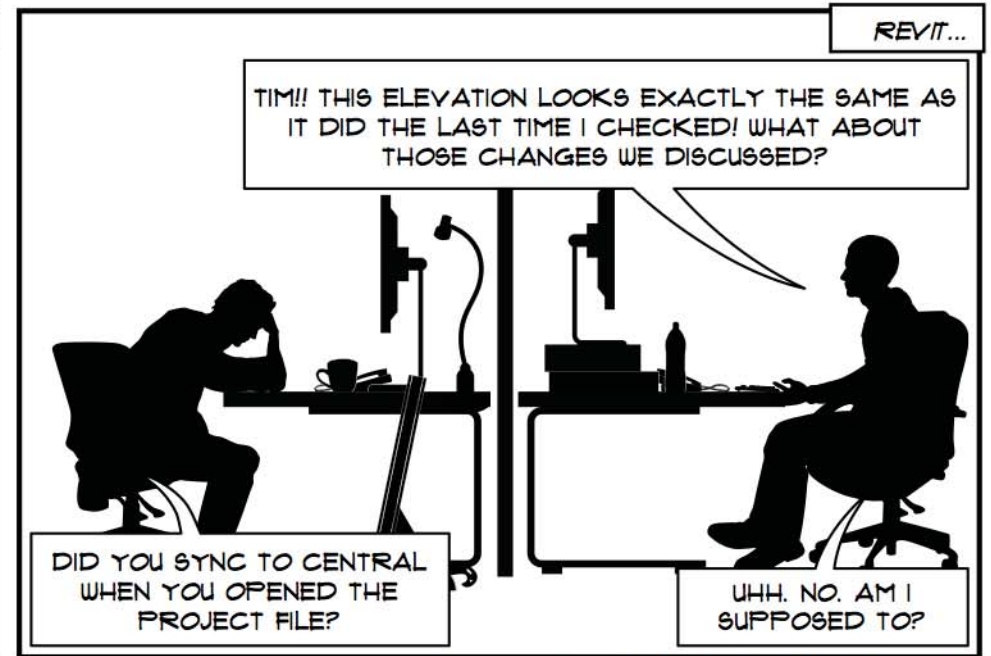
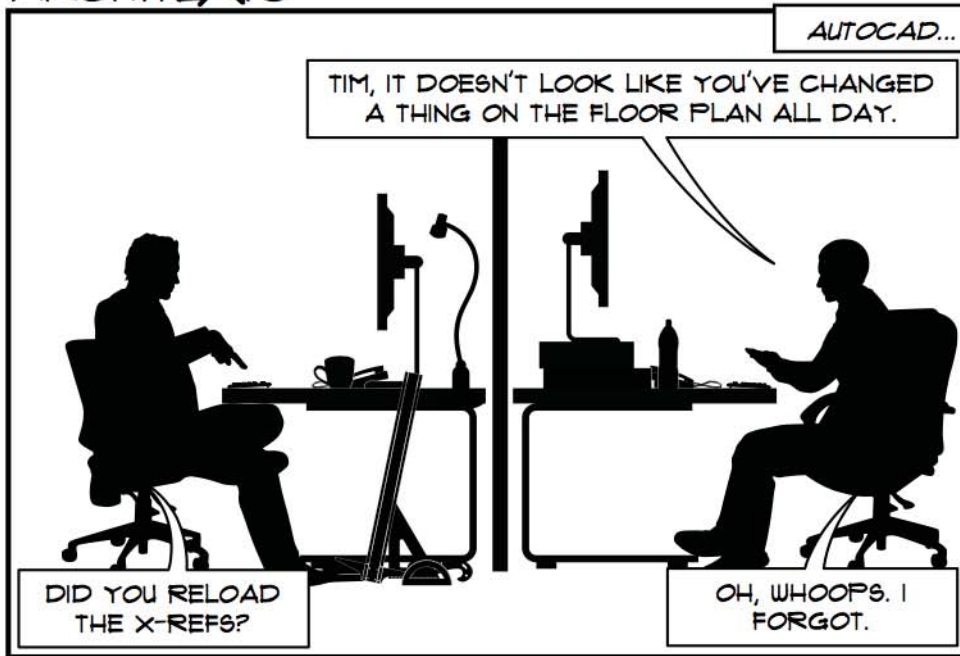
...one file to rule them all...





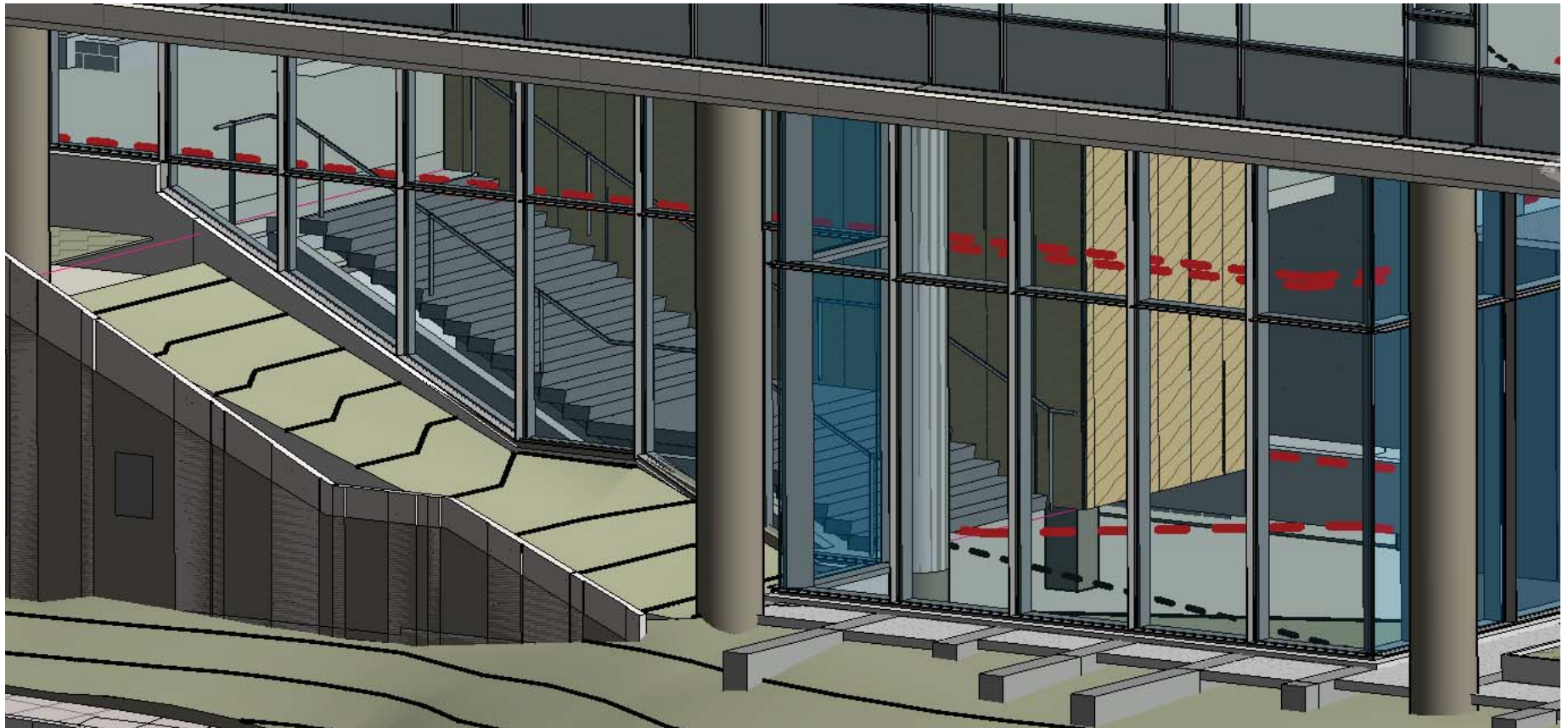
...but either way...

# ARCHITEXTS

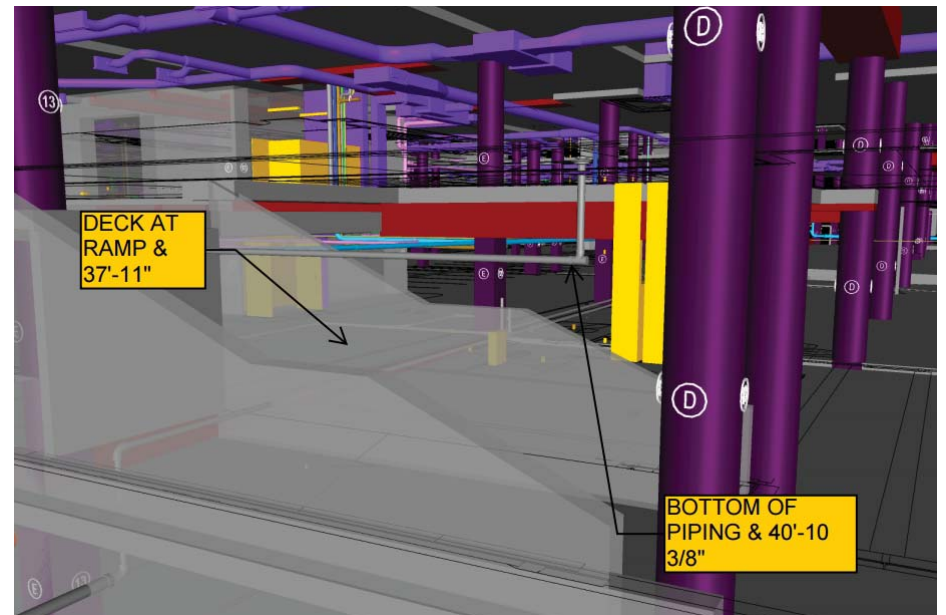
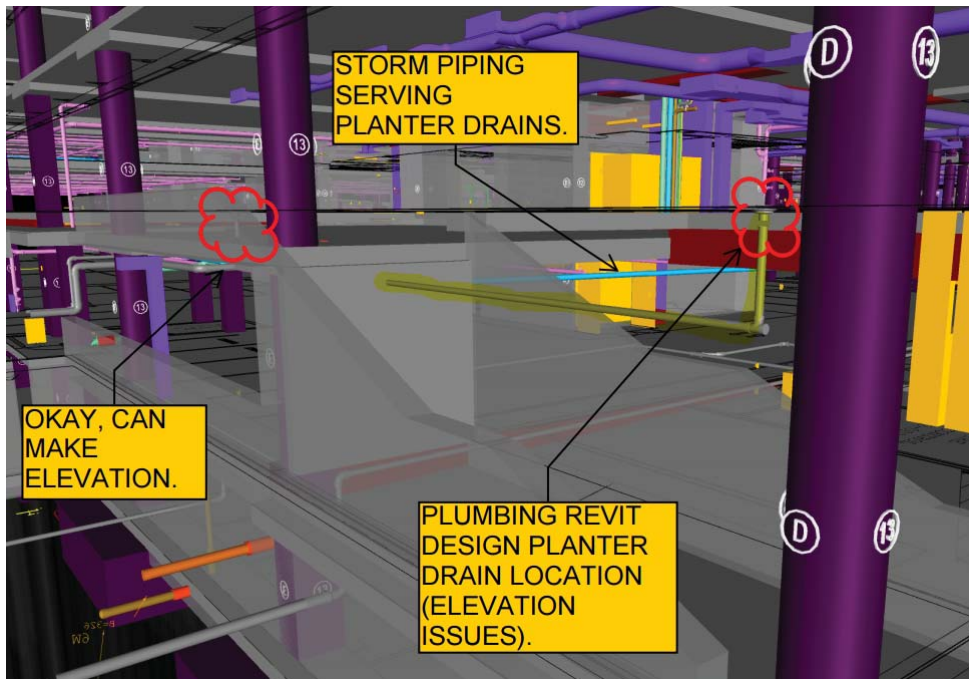


© 2013 ARCHITEXTS.US ALL RIGHTS RESERVED

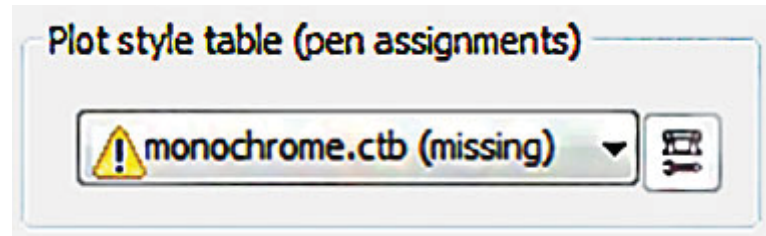
# Clash Detection



# Clash Detection...where is our plumbing?



This is stupid...

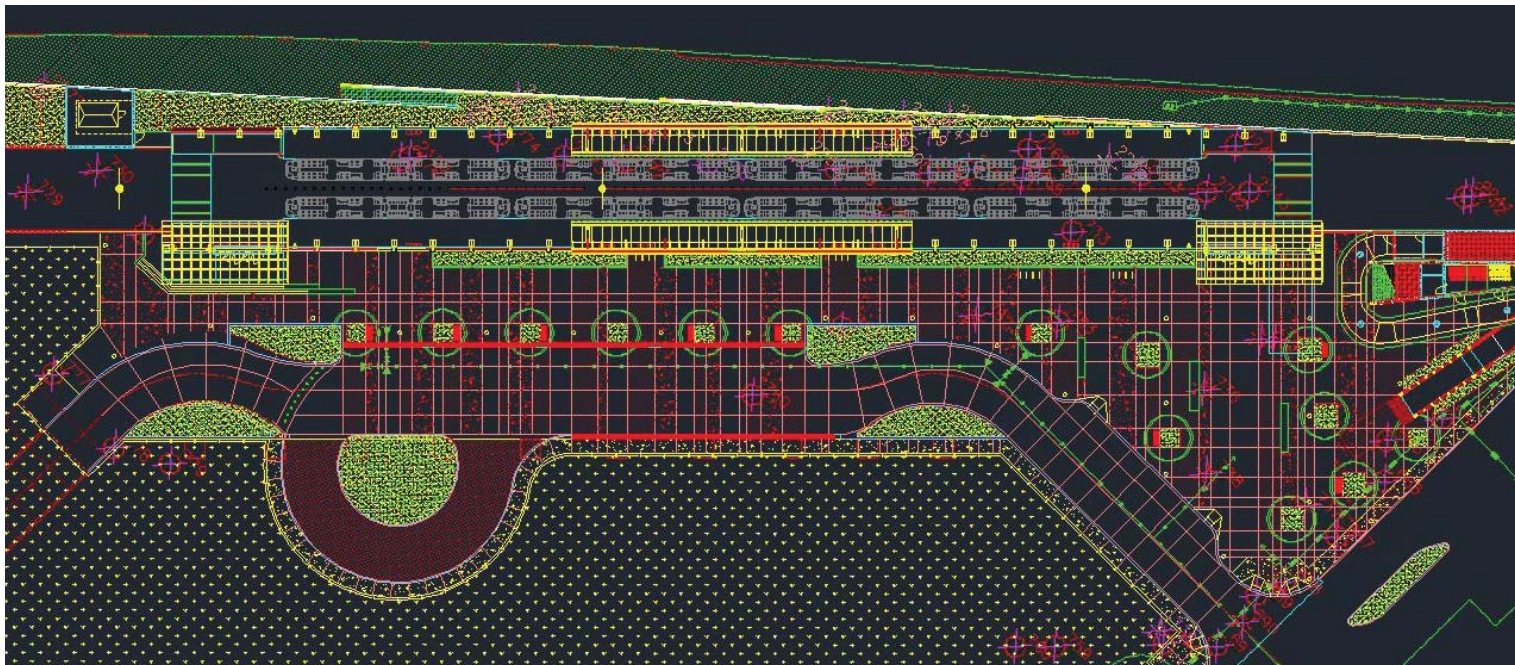
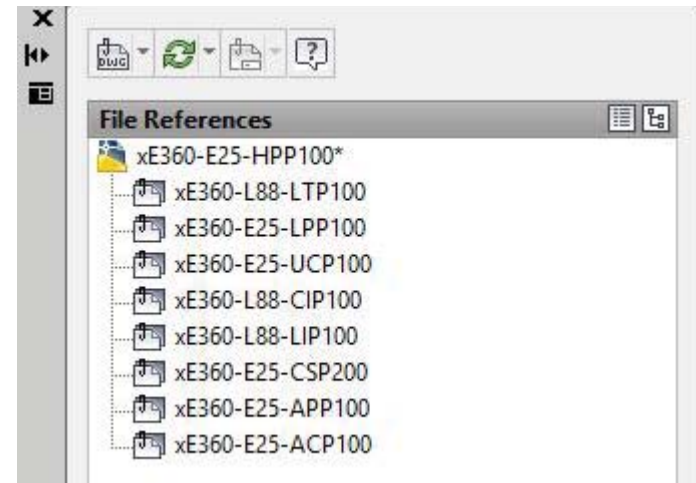




Why do we use Revit?



# File Sharing



# File Sharing

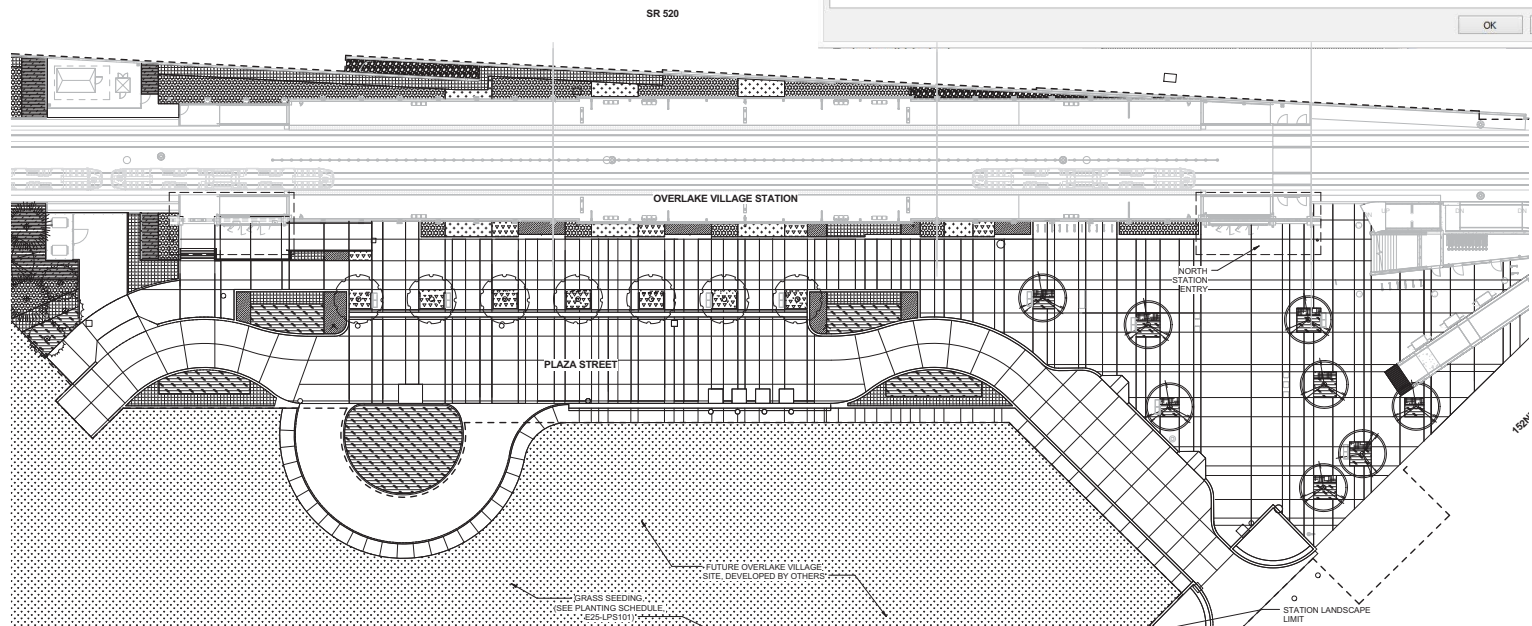
Manage Links

Revit | IFC | CAD Formats | DWF Markups | Point Clouds

Link Name	Status	Reference Type	Positions Not Saved	Saved Path	Path Type	Local Alias
E360-E25-S.rvt	Loaded	Overlay	<input type="checkbox"/>	Linked Files\E360-E25-S.rvt	Relative	
E360-E25-A-v2016.rvt	Loaded	Overlay	<input type="checkbox"/>	Linked Files\E360-E25-A-v2016.rvt	Relative	

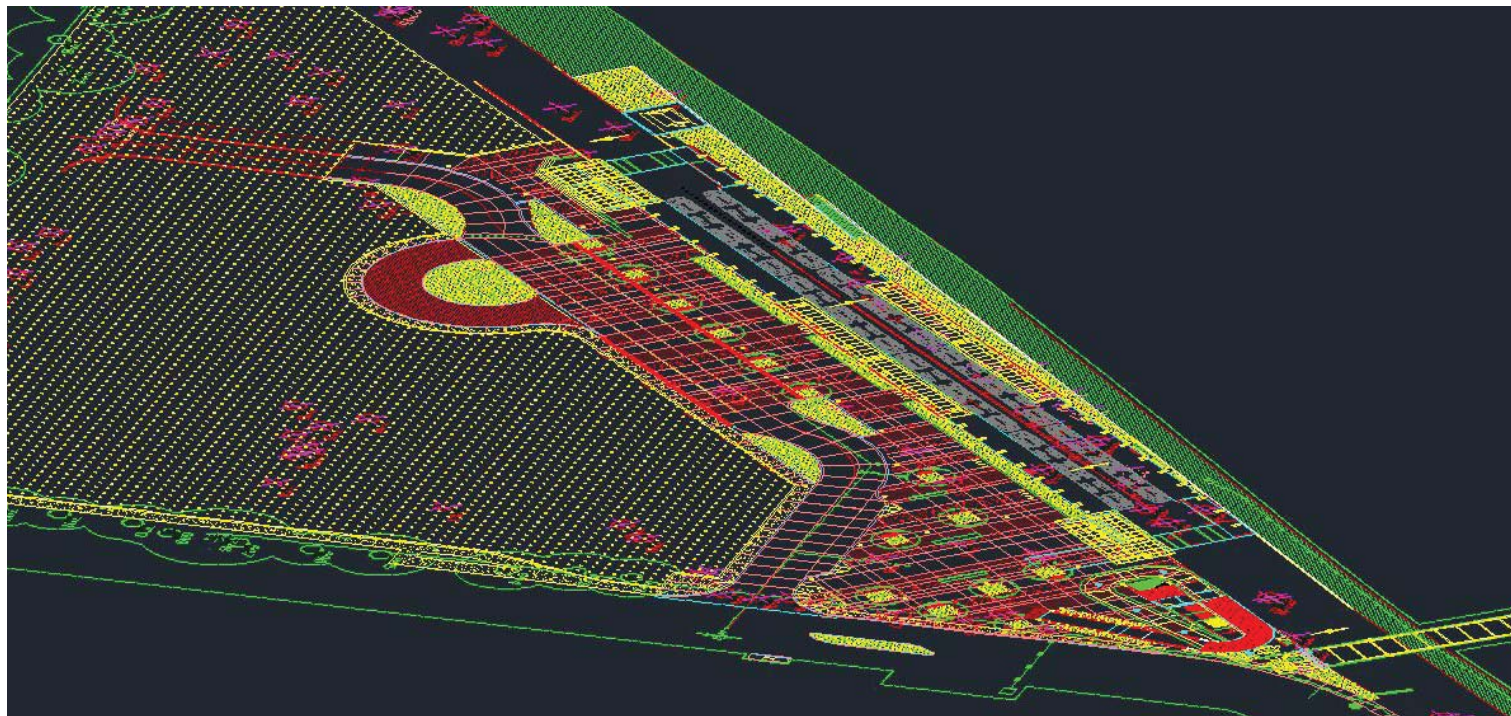
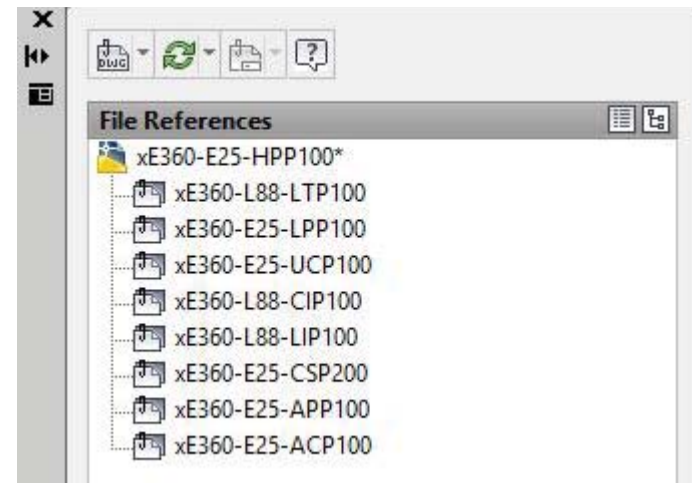
Save Positions    Manage Worksets    Reload From...    Reload    Unload    Add...    Remove    Unload for me    Clear my override

OK    Cancel    Apply    Help





TRON was a rad movie....in the 80's



HEWITT

BIM, bam, BOOM

# Instant 3d Visualization



Manage Links

Revit | IFC | CAD Formats | DWF Markups | Point Clouds

Link Name	Status	Reference Type	Positions Not Saved	Saved Path	Path Type	Local Alias
E360-E25-S.rvt	Loaded	Overlay	<input type="checkbox"/>	Linked Files\E360-E25-S.rvt	Relative	
E360-E25-A-v2016.rvt	Loaded	Overlay	<input type="checkbox"/>	Linked Files\E360-E25-A-v2016.rvt	Relative	

Save Positions    Reload From...    Reload    Unload    Add...    Remove

Manage Worksets    Unload for me    Clear my override

OK    Cancel    Apply    Help



# Instant 3d Visualization



Manage Links

Revit | IFC | CAD Formats | DWF Markups | Point Clouds

Link Name	Status	Reference Type	Positions Not Saved	Saved Path	Path Type	Local Alias
E360-E25-S.rvt	Loaded	Overlay	<input type="checkbox"/>	Linked Files\E360-E25-S.rvt	Relative	
E360-E25-A-v2016.rvt	Loaded	Overlay	<input type="checkbox"/>	Linked Files\E360-E25-A-v2016.rvt	Relative	

Save Positions    Reload From...    Reload    Unload    Add...    Remove

Manage Worksets    Unload for me    Clear my override

OK    Cancel    Apply    Help

## Instant 3d Visualization





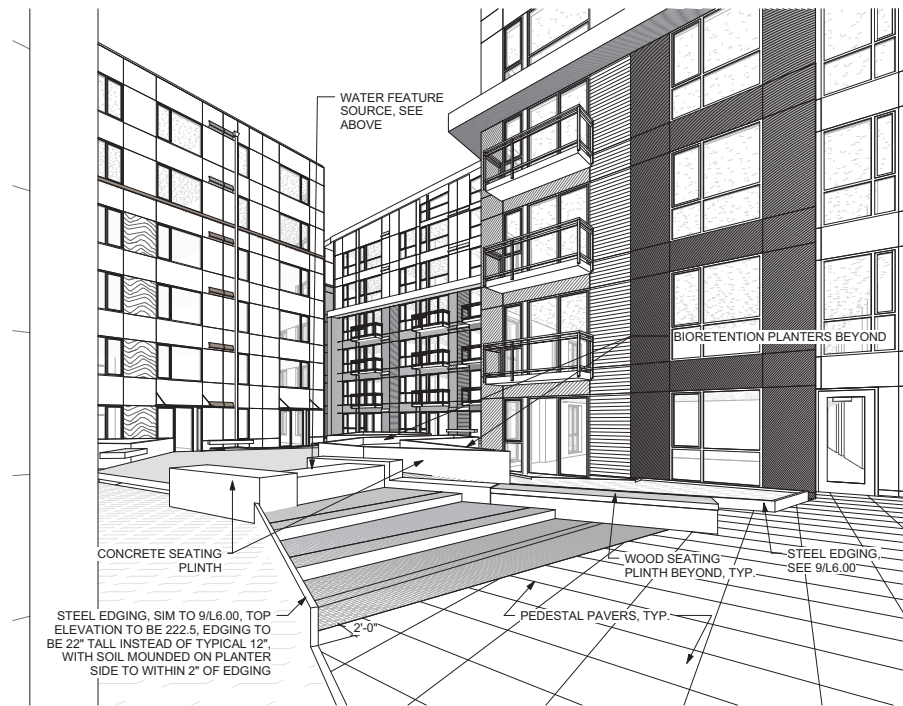
## Instant 3d Visualization



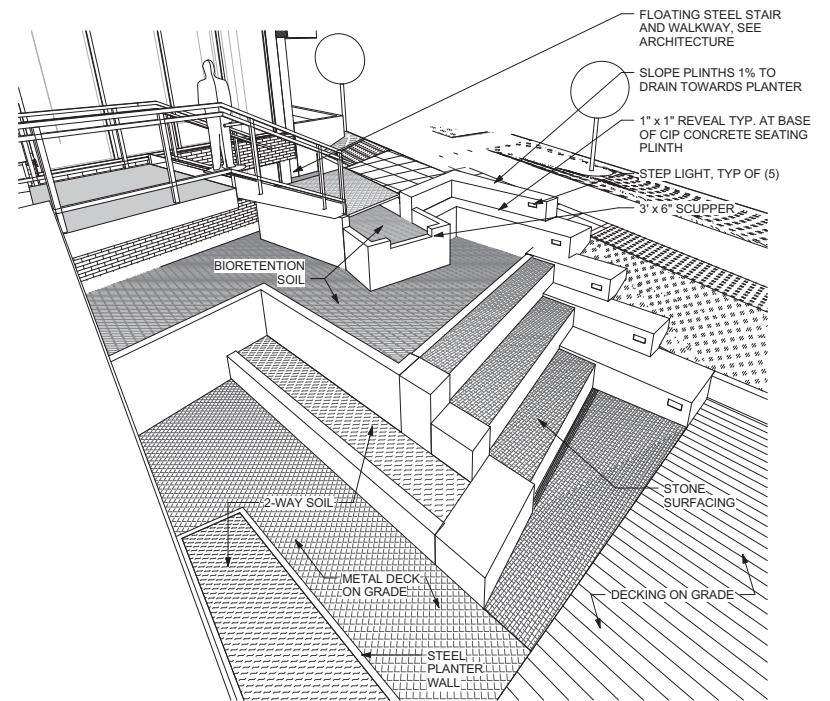
HEWITT

BIM, bam, BOOM

# BIM v. 2D Drafting



4 WATER FEATURE #2



1 WATER FEATURE #1

I love it when a plan comes together...





I love it when a plan comes together...



# BIM v. 3D Modeling



**Sang**

Sang is a member of the SketchUp development team. He enjoys rock climbing, pho and long walks on the beach.

You can change Sang's shirt by clicking on him with the Interact tool.

Shirt Color



**BIM, bam, BOOM**




**I'M WITH  
STUPID**




# BIM v. 3D Modeling



Properties

 Parc-Vue-Backed-Bench

Furniture (1)  Edit Type

Constraints

Level	NORTH PLAZA
Host	Floor : Site - CIPConcrete - ...
Offset	0' 0 1/2"
Moves With Nearby Eleme...	<input type="checkbox"/>

Graphics

Divider	<input checked="" type="checkbox"/>
End Arms	<input checked="" type="checkbox"/>

Identity Data

Image	
Comments	
Mark	
Workset	Site Furnishings
Edited by	dbramer@hewittseattle.com

Phasing

Phase Created	New Construction
Phase Demolished	None

# BIM v. 3D Modeling



Type Properties

Family: Parc-Vue-Backed-Bench Load...

Type: Parc-Vue-Backed-Bench Duplicate... Rename...

Type Parameters

Parameter	Value
<b>Text</b>	
Construction Details	
Green Building-LEED	
Installation-Fabrication	
Product Data	
Sales Information	
Specification	
<b>Identity Data</b>	
URL	<a href="http://www.landscapeforms.com">www.landscapeforms.com</a>
Warranty	<a href="http://www.landscapeforms.com/en-us/about-us/pages/our-warran">www.landscapeforms.com/en-us/about-us/pages/our-warran</a>
Manufacturer	Landscape Forms
Model	Parc_Vue_Backed Bench
Description	Parc_Vue_Backed Bench
Product URL	<a href="http://www.landscapeforms.com/en-US/site-furniture/pages/">http://www.landscapeforms.com/en-US/site-furniture/pages/</a>
Product Finishes	<a href="http://www.landscapeforms.com/en-US/Material/LF_Parc-Vue">http://www.landscapeforms.com/en-US/Material/LF_Parc-Vue</a>
Type Image	
Keynote	
Type Comments	
Assembly Code	
Cost	
Assembly Description	
Type Mark	
Revision	
Workset	Family : Furniture : Parc-Vue-Backed-Bench
Edited by	
OmniClass Number	23.40.20.00
OmniClass Title	General Furniture and Specialties
Code Name	
<b>Green Building Properties</b>	

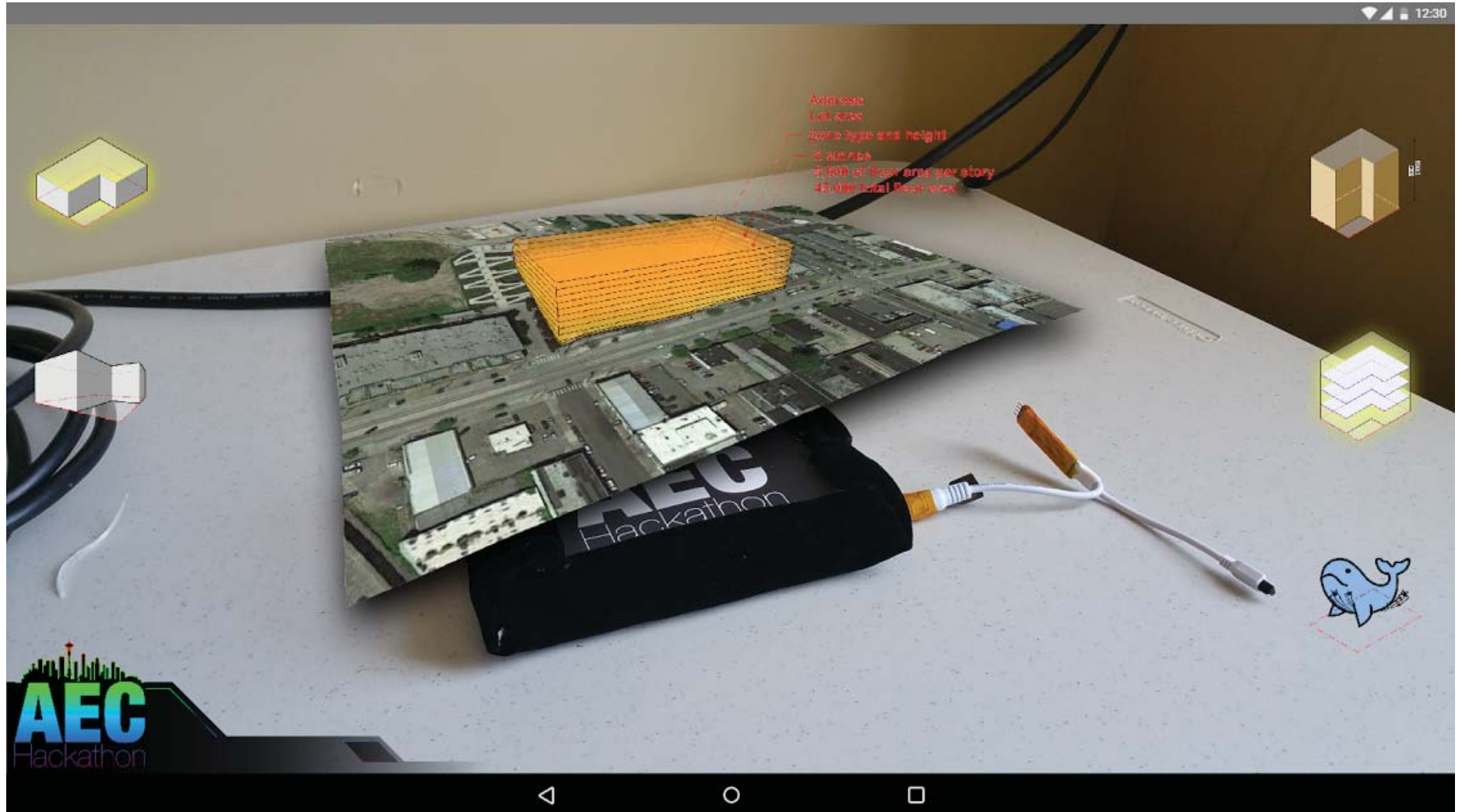
<< Preview OK Cancel Apply







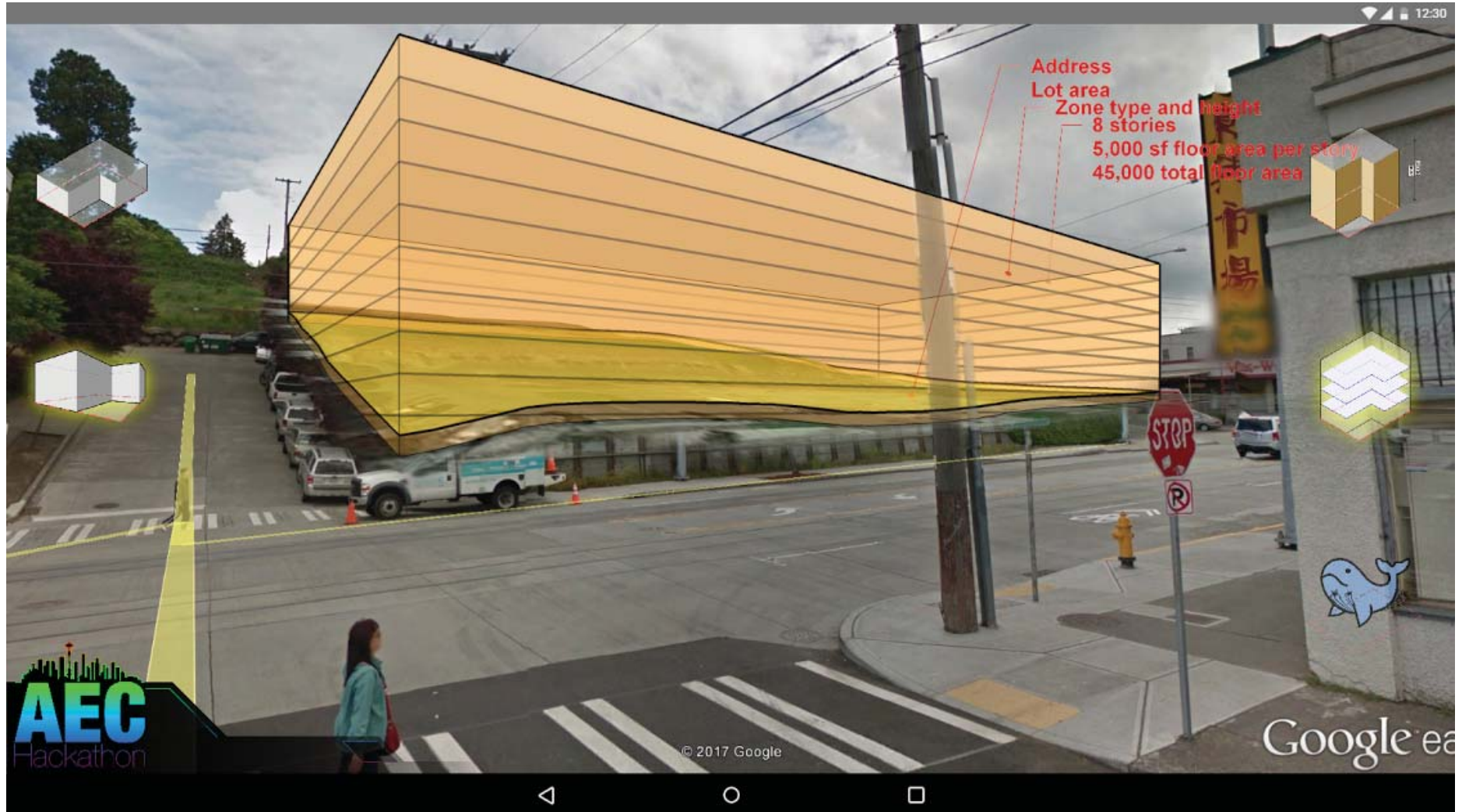
What if...?



HEWITT

BIM, bam, BOOM

What if...?





What if...?



HEWITT

BIM, bam, BOOM

What if...?



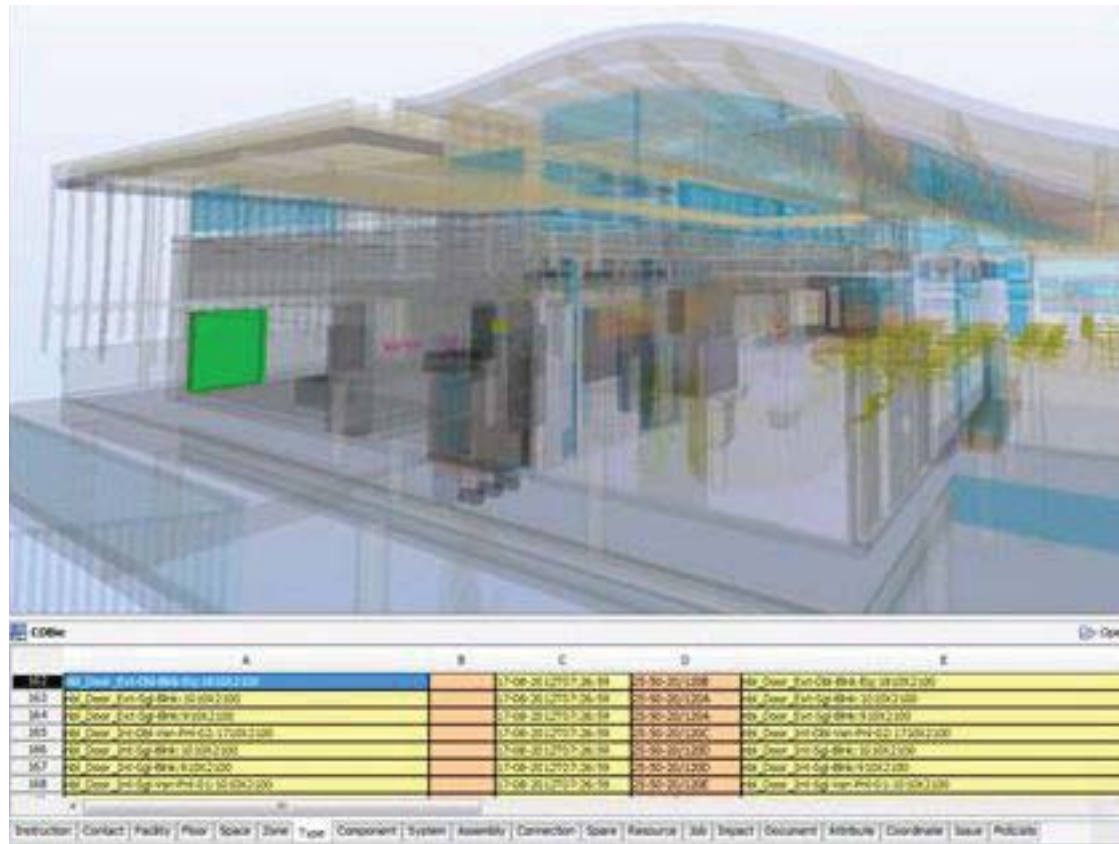


What if...?



**BIM, bam, BOOM**

What if...?



BIM, bam, BOOM